

PRODUCT

# 2S PLATIN



Upholstery fabric category **FLAT WOVEN FABRIC**  
 - Multi-coloured flat woven fabric with effect yarns

Material **100% PES**

Care label

QUALITY FEATURES

**The product meets the quality requirements of DIN EN 14 465:2006**



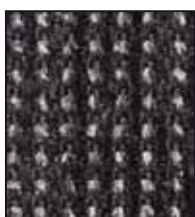
Abrasion resistance EN ISO 12947-2	<b>85,000 rubs</b>
Pilling EN ISO 12945-2 - 2,000 rubs	<b>4-5</b>
Light fastness EN ISO 105-B02 - Vers. 2	<b>5</b>
Fastness to rubbing EN ISO 105-X12	<b>5 / 4-5</b>
Cigarette test DIN EN 1021-1	<b>passed</b>
Azo dyes	<b>not verifiable</b>
Aryl amines in accordance with applicable legal provisions	
Allergenic dispersion dyes in accordance with §64 LFGB B 82.02-10	<b>not verifiable</b>

COVER PROPERTIES

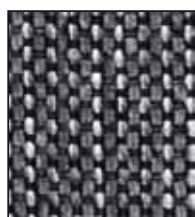
It is a typical feature, occurring with normal use, that flat woven fabric tends to become fluffy, leading to the formation of lint (pilling). Fibres from other materials can also adhere to the fabric. Use a lint and bobble remover to remove pilling. Pilling is caused by the properties of the fibres and does not constitute grounds for complaint.

Colour transfer from cushions and/or clothing does not represent a defect of the material. Deviations in colour and texture are typical of this type of product and do not constitute grounds for complaint.

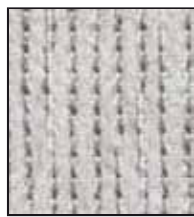
Further test results are available from Cotta Collection AG on request.



BLACK C120



GREY C121



PEARL C122



SAND C123



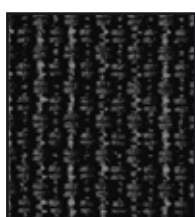
SILVER C124



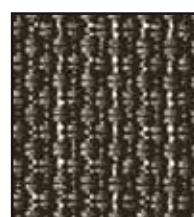
CHOCOLATE C126



HAZEL C127



MUD C128



ROCK C129