

PRODUCT

2B RANCHO

Upholstery fabric category	LEATHER
Leather thickness in accordance with standard EN ISO 2589	0,9-1,1 mm

QUALITY FEATURES

The product meets the quality requirements of DIN EN 14 465:2006



Light fastness EN ISO 105-B02 - Vers. 2	5
Fastness to rubbing EN ISO 11640 dry/wet/sweet solution	5/4-5/5
Long-term folding behaviour DIN EN ISO 5402/DIN 53351/ DIN 53359 - sample form A - 50,000 folds	no cracks
Cigarette test DIN EN 1021-1/BS 5852	passed
PCP pentachlorophenol	not verifiable
Azo dyes Aryl amines in accordance with applicable legal provisions	not verifiable
Chromium (VI) content DIN EN ISO 17075	not verifiable

Further test results are available from Cotta Collection AG on request.

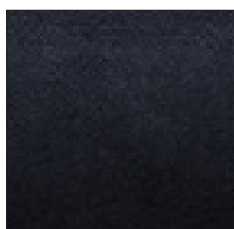
COVER PROPERTIES

Rancho is a corrected grain, embossed and coated buffalo leather.

The back and arms are covered with a high-quality polyurethane synthetic leather with an irregular embossed finish. Since leather is a natural product, the individual characteristics of each hide are nevertheless visible, which is what makes each piece of leather upholstery unique.

Wiping with a clean, damp cloth is generally all it takes to clean the leather. Do not use aggressive cleaning materials or care products containing grease, which may damage the surface. If in doubt, ask your retailer.

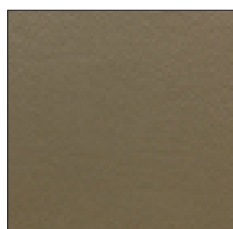
Do not place your furniture immediately next to sources of heat (radiators, fireplaces) and avoid strong, direct sunlight. Avoid the transfer of colour from clothing or throw cushions. Variations in colour and texture are typical of this product and are no grounds for claims or complaints.



BLACK M7510



CREAM M7511



STONE M7512



BROWN M7513



ARGENT M7514