

PRODUCT

# 2S MAISON

Upholstery fabric category	FLAT WOVEN FABRIC
Material	100 % POLYESTER (PES)
Care label	☒☒☒☒☒

## QUALITY FEATURES

The product meets the quality requirements of DIN EN 14 465:2006.



Abrasion resistance EN ISO 12947-1 & 2	91,000 rubs
Pilling EN ISO 12945-2 - 2,000 rubs	5
Light fastness EN ISO 105-B02 - Vers. 2	5
Fastness to rubbing EN ISO 105-X12	4/5
Cigarette test DIN EN 1021-1	passed
Azo dyes	
Aryl amines in accordance with applicable legal provisions EN 14362-1 & 3	not verifiable
Allergenic dispersion dyes in accordance with DIN 54231	not verifiable

Further test results are available from Cotta Collection AG on request.

## COVER PROPERTIES

It is a typical feature, occurring with normal use, that flat woven fabric tends to become fluffy, leading to the formation of lint (pilling). Fibres from other materials can also adhere to the fabric. Use a lint and bobble remover to remove pilling. Pilling is caused by the properties of the fibres and does not constitute grounds for complaint.

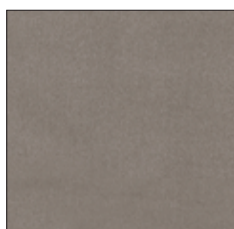
Colour transfer from cushions and/or clothing does not represent a defect of the material. Deviations in colour and texture are typical of this type of product and do not constitute grounds for complaint.



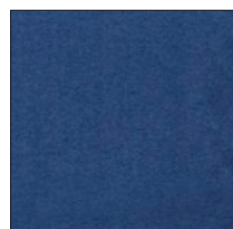
PEARL E430



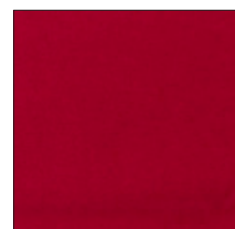
GREY E431



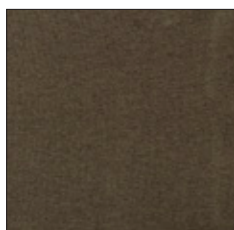
SAHARA E432



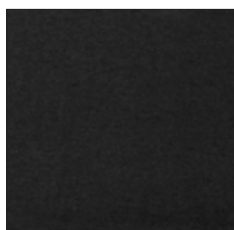
NAVY E434



RED APPLE E435



MUD E436



ANTHRACITE E437