

PRODUCT

# 1S JAM

Upholstery fabric category

**FLAT WOVEN FABRIC**  
Two-one flat woven fabric

Material

**100% POLYESTER (PES)**

Care label



COTTA  
GROUP

## QUALITY FEATURES

The product meets the quality requirements of DIN EN 14 465:2006.



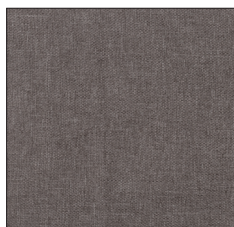
Abrasion resistance EN ISO 12947-1 & 2	<b>35,000 rubs</b>
Pilling EN ISO 12945-2 - 2,000 rubs	<b>5</b>
Light fastness EN ISO 105-B02 - Vers. 2	<b>5</b>
Fastness to rubbing EN ISO 105-X12	<b>5/4-5</b>
Cigarette test DIN EN 1021-1	<b>passed</b>
Azo dyes	
Aryl amines in accordance with applicable legal provisions EN 14362-1 & 3	<b>not verifiable</b>
Allergenic dispersion dyes in accordance with DIN 54231	<b>not verifiable</b>

Further test results are available from Cotta Collection AG on request.

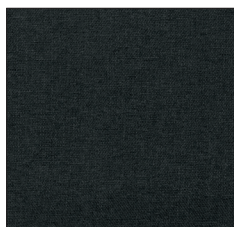
## COVER PROPERTIES

It is a typical feature, occurring with normal use, that flat woven fabric tends to become fluffy, leading to the formation of lint (pilling). Fibres from other materials can also adhere to the fabric. Use a lint and bobble remover to remove pilling. Pilling is caused by the properties of the fibres and does not constitute grounds for complaint.

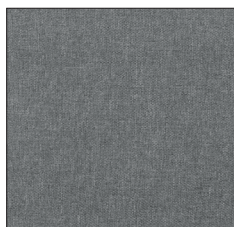
Colour transfer from cushions and/or clothing does not represent a defect of the material. Deviations in colour and texture are typical of this type of product and do not constitute grounds for complaint.



BROWN C304



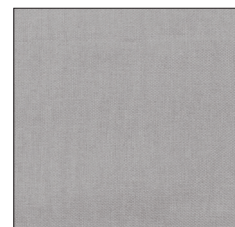
BLACK C310



GREY C311



ANTHRACITE C312



ARGENT C315



PLATINUM C317



CHERRY C320