

PRODUCT

2S VELVET

| | |
|----------------------------|----------------------|
| Upholstery fabric category | VELOUR |
| Material | 100% POLYESTER (PES) |
| Care label | |



QUALITY FEATURES

The product meets the quality requirements of DIN EN 14 465:2006.



| | |
|---|----------------|
| Abrasion resistance EN ISO 12947-1 & 2 | > 80,000 rubs |
| Pilling EN ISO 12945-2 - 2,000 rubs | 5 |
| Light fastness EN ISO 105-B02 - Vers. 2 | 4-5 |
| Fastness to rubbing EN ISO 105-X12 | 4-5/4-5 |
| Cigarette test DIN EN 1021-1 | passed |
| Azo dyes | |
| Aryl amines in accordance with applicable legal provisions EN 14362-1 & 3 | not verifiable |
| Allergenic dispersion dyes in accordance with DIN 54231 | not verifiable |

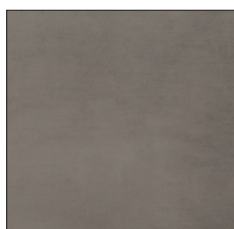
Further test results are available from Cotta Collection AG on request.

COVER PROPERTIES

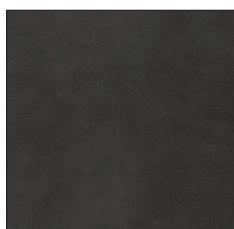
It is a typical feature, occurring with normal use, that flat woven fabric tends to become fluffy, leading to the formation of lint (pilling). Fibres from other materials can also adhere to the fabric. Use a lint and bobble remover to remove pilling. Pilling is caused by the properties of the fibres and does not constitute grounds for complaint. Colour transfer from cushions and/or clothing does not represent a defect of the material. Deviations in colour and texture are typical of this type of product and do not constitute grounds for complaint.



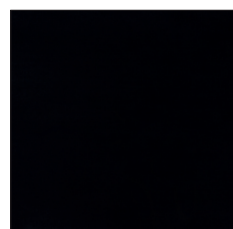
PEARL F600



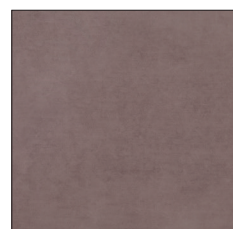
SILVER F601



STONE F602



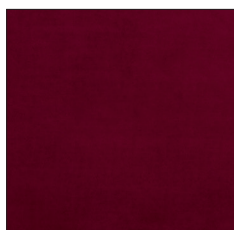
BLACK F603



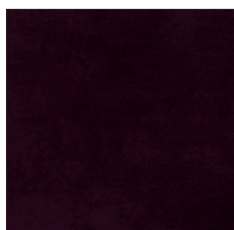
ROSEWOOD F604



CURRY F605



RED F606



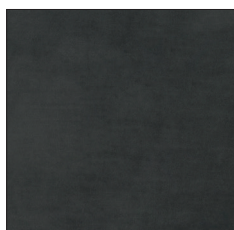
PURPLE F607



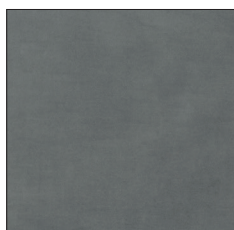
OLIVE F608



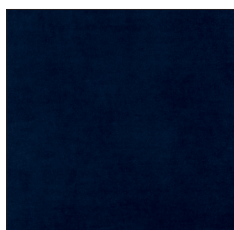
BROWN F609



ANTHRACITE F610



GREY F611



NAVY BLUE F612



GREEN F613

VERSION: 03-2021

Please note that the colours shown may vary from the original.

COTTA Collection AG • Industriestrasse 4 • 9487 Benden • Fürstentum Liechtenstein • Tel.: +423 377 32 90 • Fax: +423 377 32 91 • E-Mail: info@cotta.li