

PRODUCT

4F EVITA

Upholstery fabric category

PIGMENTED LEATHER
with 2-tone effect

Leather thickness in accordance with standard EN ISO 2589

0,9-1,1 mm

COTTA
GROUP

QUALITY FEATURES

The product meets the quality requirements of DIN EN 13336:2012.



Light fastness EN ISO 105-B02

5

Fastness to rubbing EN ISO 11640/41
dry/wet/sweet solution

5/5/4-5

Long-term folding behaviour DIN EN ISO 5402-1
i. A. DIN 53359 - 50,000 folds

no cracks

Cigarette test DIN EN 1021-1/BS 5852-0

passed

Azo dyes

Aryl amines in accordance with applicable legal provisions DIN EN 14362-1 & 3 **not verifiable**

PCP pentachlorophenol, TeCP, TriCP SOP 4309

not verifiable

Chromium (VI) content DIN EN ISO 17075

not verifiable

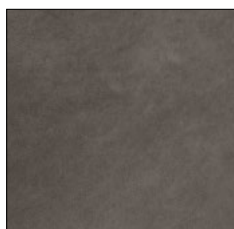
Further test results are available from Cotta Collection AG on request.

COVER PROPERTIES

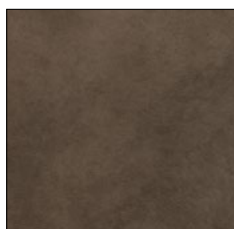
This is a corrected, embossed and coated leather. As leather is a natural product, the individual characteristics of every hide are visible, contributing to the uniqueness of every leather covering and underlining its elegance and value.

The back and tensioned sections are covered with high-grade split leather. Wiping the leather with a clean, slightly damp cloth is usually enough to clean it. Never use aggressive cleaning agents and grease-based care products that could attack the surface. If in doubt, ask your dealer or use our proven cleaning and care products that can be purchased from www.cotta-care.com. Phone +49 (0) 800 538 32 66 for free advice on questions and problems.

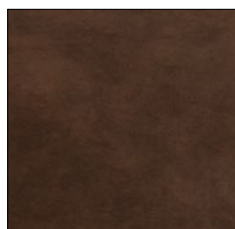
Do not position your furniture directly adjacent to heat sources (radiators, fireplaces) and avoid strong, direct sunlight. Avoid colour transfer from clothing or cushions. Deviations in colour and texture are typical of this type of product and do not constitute grounds for complaint.



GREY S4350



STONE S4351



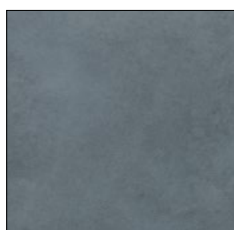
TOBACCO S4352



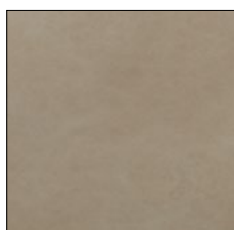
OLIVE S4353



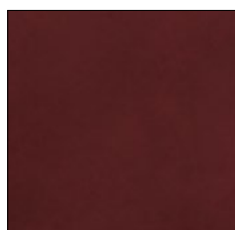
DIJON S4354



GREYBLUE S4355



ECRU S4356



BORDEAUX S4358