

PRODUCT

1S JAM

Upholstery fabric category

FLATWEAVE
with water-repellent finish

Material

100 % POLYESTER (PES)

Care label



COTTA
GROUP

QUALITY FEATURES

The product meets the quality requirements of DIN EN 14 465:2006.



Abrasion resistance EN ISO 12947-1 & 2

35,000 rubs

Pilling EN ISO 12945-2 - 2,000 rubs

5

Light fastness EN ISO 105-B02 - Vers. 2

5

Fastness to rubbing EN ISO 105-X12

5/4-5

Cigarette test DIN EN 1021-1

passed

Azo dyes

Aryl amines in accordance with applicable legal provisions EN 14362-1 & 3 **not verifiable**

Allergenic dispersion dyes in accordance with DIN 54231

not verifiable

Further test results are available from Cotta Collection AG on request.

COVER PROPERTIES

It is a typical feature, occurring with normal use, that flat woven fabric tends to become fluffy, leading to the formation of lint (pilling). Fibres from other materials can also adhere to the fabric. Use a lint and bobble remover to remove pilling. Pilling is caused by the properties of the fibres and does not constitute grounds for complaint.

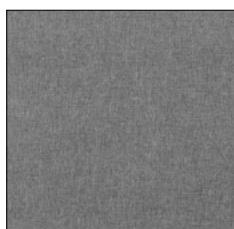
Colour transfer from cushions and/or clothing does not represent a defect of the material. Deviations in colour and texture are typical of this type of product and do not constitute grounds for complaint.



BROWN C304



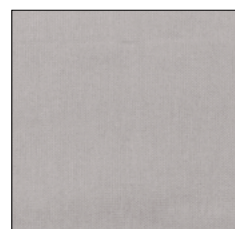
BLACK C310



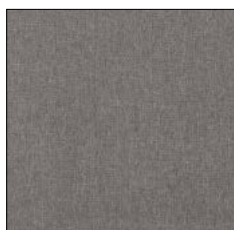
GREY C311



ANTHRACITE C312



ARGENT C315



PLATINUM C317



CHERRY C320



STANDARD 100 ZH015 181991 TESTEX

www.oeko-tex.com