

PRODUCT

1S RHODOS

Upholstery fabric category	FLATWEAVE
Material	85% POLYESTER (PES) 15% POLYAMIDE (PA)
Care labelling	

QUALITY FEATURES

The product complies with quality requirements according to DIN EN 14 465:2006

Abrasion resistance EN ISO 12947-1 & 2	30,000 cycles
Pilling EN ISO 12945-2 - 2000 cycles	4
Light fastness EN ISO 105-B02 - method 2	5
Colour fastness to rubbing EN ISO 105-X12	4-5
Cigarette test DIN EN 1021-1	passed
MAK amines, azo dyes EN 14362-1 & 3	not detectable
Allergenic & carcinogenic dispersion dyes DIN 54231	not detectable

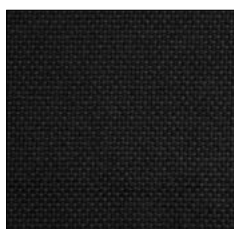
Other test results are available on request from COTTA Collection AG.

PROPERTIES OF THE COVER FABRIC

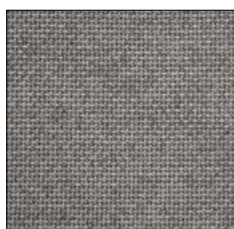
Due to its typical properties and behaviour upon use, flat-weave is prone to certain fuzzing, which may also lead to pilling. It is also possible that foreign fibres adhere to the material. Any knots or pilling occurred in that way may be removed using a lint-removal device. Such fibre properties do not entitle users to any claims. Discolouring due to cushions and/or clothing fabrics does not represent a defect of the cover fabric. Colour and texture deviations are typical for this product and do not entitle users to any claims. Interaction of pressure, heat and humidity may lead to pile displacement (pressure marks) to some extent. This property is referred to as indentation or seating marks and is a typical feature that does not represent minor quality in any way.



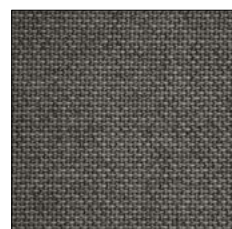
MUD A050



BLACK A051



STONE A052



GREY A053



ELEPHANT A054



MOUSE A055

