

PRODUCT

2S PULSE

Upholstery fabric category

SYNTHETIC LEATHER

Material

64% POLYURETHANE (PU) / 25% POLYESTER (PES) / 11% COTTON (CO)

QUALITY FEATURES

The products meet the quality requirements for upholstery as per the applicable regulations DIN EN 15618:2012.



Abrasion resistance EN ISO 5470-2 > 100,000 rubs

Light fastness EN ISO 105-B02 - Vers. 2 >5

Fastness to rubbing EN ISO 105-X12 5/5

Long-term folding behaviour DIN EN ISO 32100
DIN 53359 - 200,000 folds passed

Cigarette test DIN EN 1021-1 passed

Azo dyes
Aryl amines in accordance with applicable legal provisions EN 14362-1 & 3 not verifiable

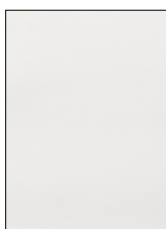
Allergenic dispersion dyes in accordance with DIN 54231 not verifiable

COVER PROPERTIES

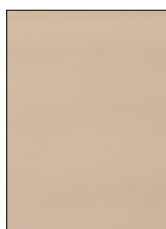
This synthetic leather is a smooth PU synthetic leather. The PU finish generally has a natural-looking leather appearance, ranging from smooth to strongly textured. Synthetic leather is characterised by its durability, wear resistance and ease of cleaning. Simply wiping with a damp cloth is all the cleaning needed. Do not use oily, greasy and abrasive agents, as they can damage the surface.

Colour transfer from cushions and/or clothing does not represent a defect of the material. Deviations in colour and texture are typical of this type of product and do not constitute grounds for complaint.

Further test results are available from Cotta Collection AG on request.



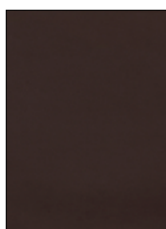
WHITE D200



BISQUIT D202



RED D205



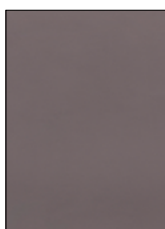
COFFEE D207



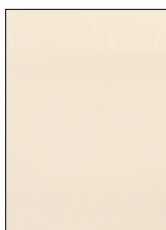
FANGO D208



BLACK D209



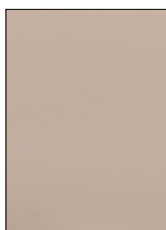
GREY D210



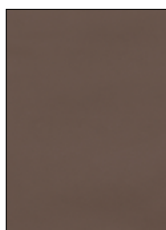
CREAM D211



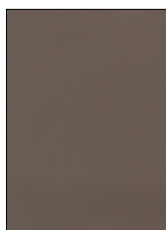
SAND D213



LIGHT BEIGE D217



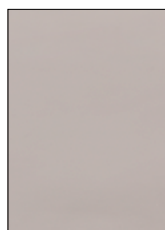
MUD D218



ELEPHANT D224



FOG D256



ARGENT D259



STANDARD 100 ZH015 181991 TESTEX

www.oeko-tex.com