

PRODUCT

1S RUNWAY

| | |
|----------------------------|----------------------|
| Upholstery fabric category | CHENILLE |
| Material | 100% POLYESTER (PES) |
| Care label | ☒☒☒☒☒ |

QUALITY FEATURES

The product meets the quality requirements of DIN EN 14 465:2006.



| | |
|---|----------------|
| Abrasion resistance EN ISO 12947-1 & 2 | 30,000 rubs |
| Pilling EN ISO 12945-2 - 2,000 rubs | 5 |
| Light fastness EN ISO 105-B02 - Vers. 2 | 5 |
| Fastness to rubbing EN ISO 105-X12 | 5 |
| Cigarette test DIN EN 1021-1 | passed |
| Azo dyes | |
| Aryl amines in accordance with applicable legal provisions EN 14362-1 & 3 | not verifiable |
| Allergenic dispersion dyes in accordance with DIN 54231 | not verifiable |

Further test results are available from Cotta Collection AG on request.

COVER PROPERTIES

Discolouring due to cushions and/or clothing fabrics does not represent a defect of the upholstery fabric. Colour and texture deviations are typical for this product and do not entitle users to any claims. Interaction of pressure, heat and/or humidity may lead to pile displacement (pressure marks). This property is referred to as indentation or seating marks and is a typical feature that does not represent minor quality in any way.



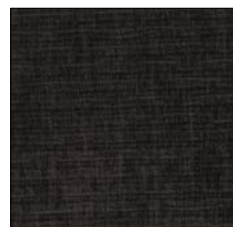
IVORY R080



BEIGE R081



STONE R082



CHOCOLATE R083



CHIANTI R084



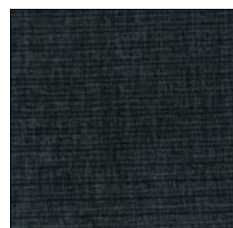
DEEP TERRA R085



INCA GOLD R086



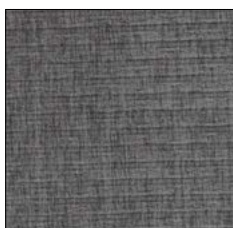
WINTER MOSS R087



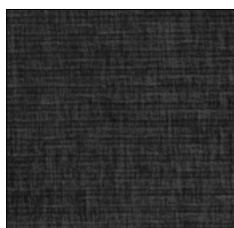
DEEP BLUE R088



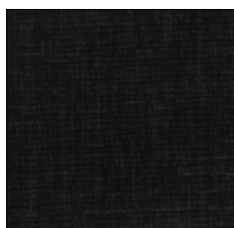
GREY R089



ASH R090



GRAPHITE R091



BLACK R092