

PRODUCT

1S MARGO

Upholstery fabric category	VELVET
Material	100% POLYESTER (PES)
Care label	

QUALITY FEATURES

The product meets the quality requirements of DIN EN 14 465:2006.

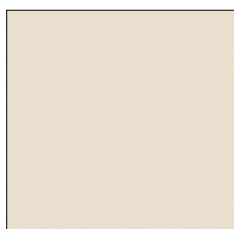


Abrasion resistance EN ISO 12947-1 & 2	100,000 rubs
Pilling EN ISO 12945-2 - 2,000 rubs	4-5
Light fastness EN ISO 105-B02 - Vers. 2	5
Fastness to rubbing EN ISO 105-X12	5
Cigarette test DIN EN 1021-1	passed
Azo dyes	
Aryl amines in accordance with applicable legal provisions EN 14362-1 & 3	not verifiable
Allergenic dispersion dyes in accordance with DIN 54231	not verifiable

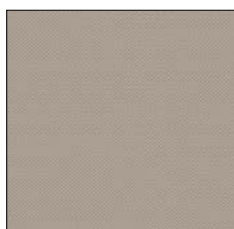
Further test results are available from Cotta Collection AG on request.

COVER PROPERTIES

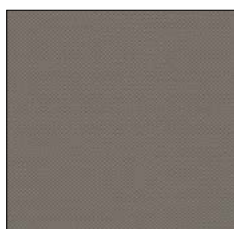
Discolouring due to cushions and/or clothing fabrics does not represent a defect of the upholstery fabric. Colour and texture deviations are typical for this product and do not entitle users to any claims. Interaction of pressure, heat and/or humidity may lead to pile displacement (pressure marks). This property is referred to as indentation or seating marks and is a typical feature that does not represent minor quality in any way.



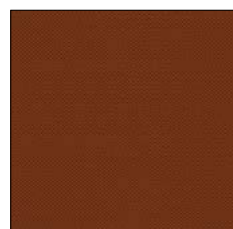
ECRU B170



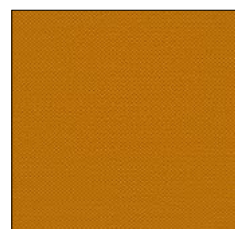
SAND B171



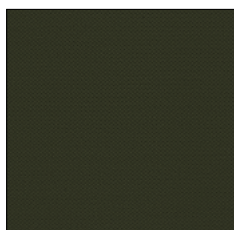
TAUPE B172



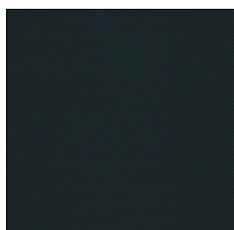
CINNAMON B173



MUSTARD B174



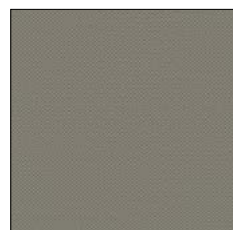
DARK GREEN B175



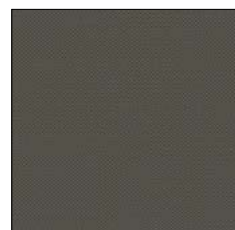
DEEP BLUE B176



GRAPHITE B177



ELEPHANT B178



GREY B179